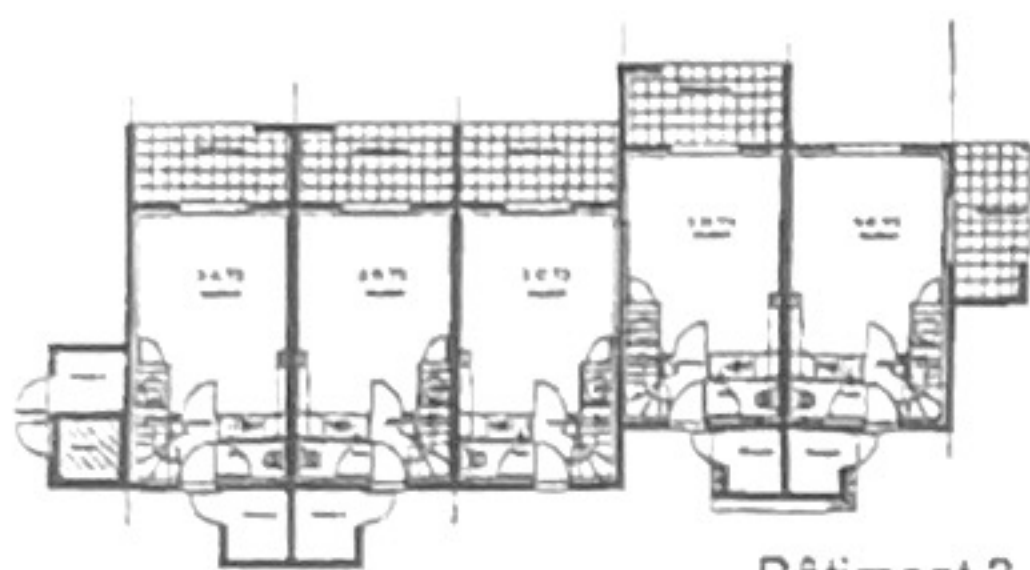
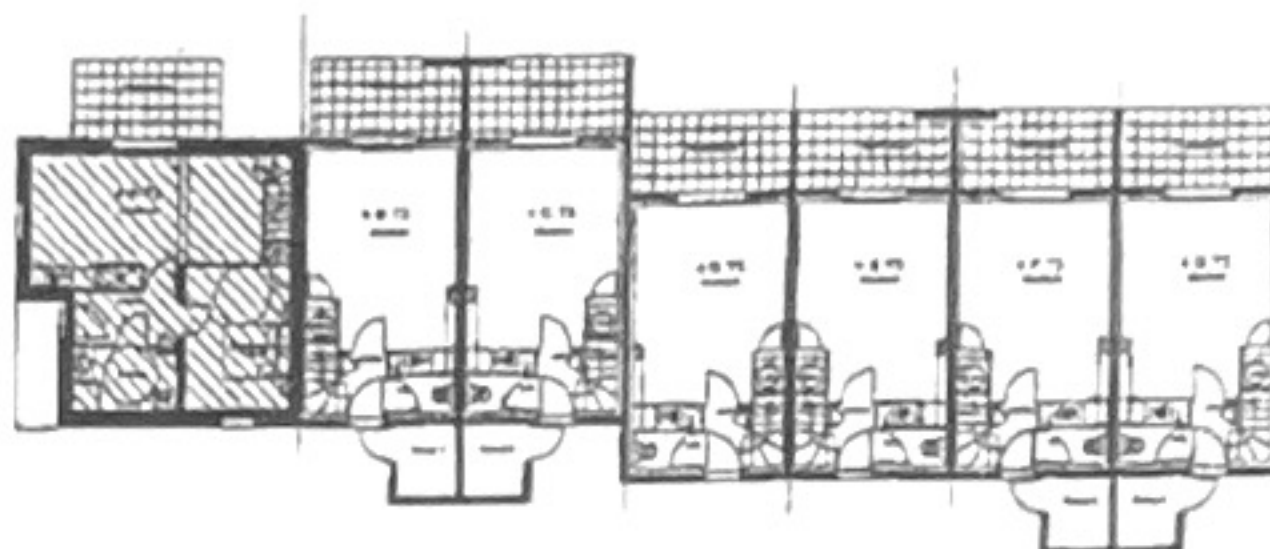


Bâtiment 4

Niveau : REZ DE CHAUSSEE



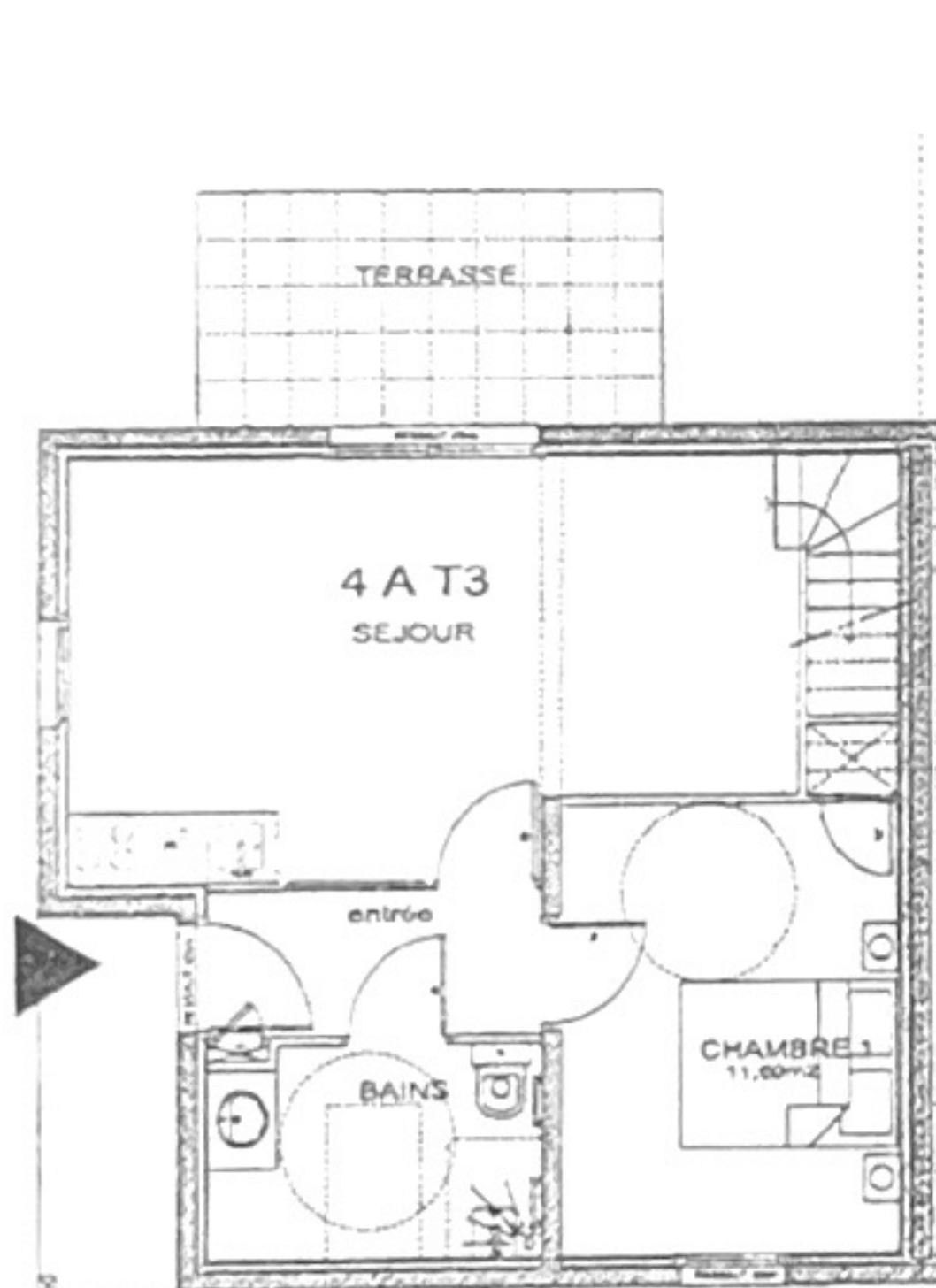
Bâtiment 3



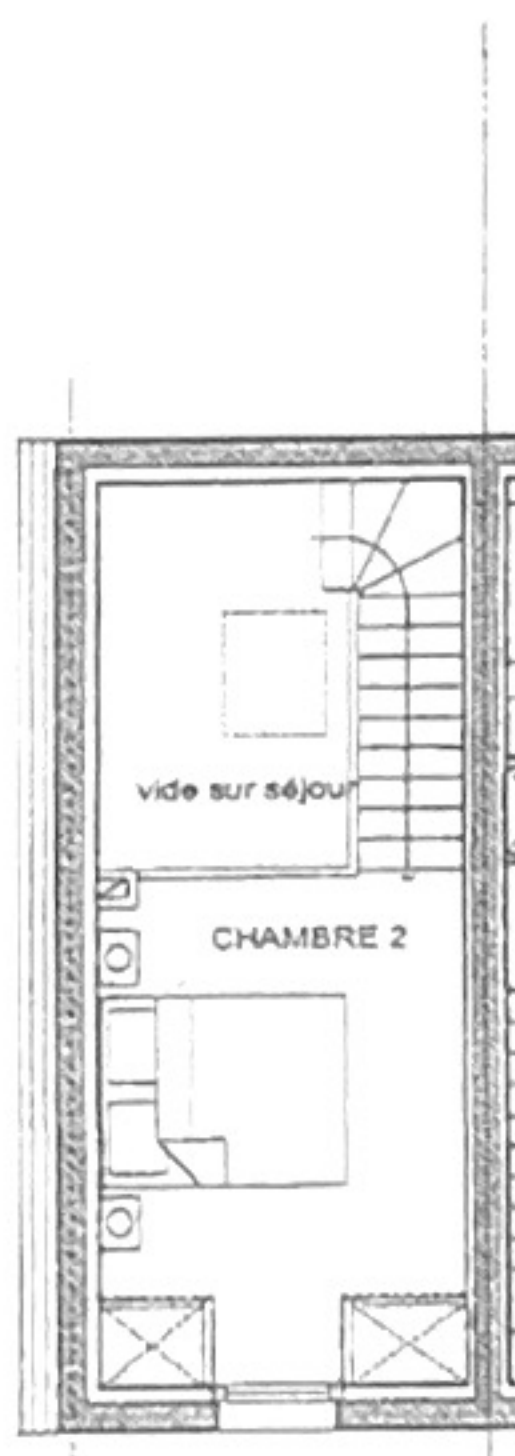
Bâtiment 4

Appartement : A

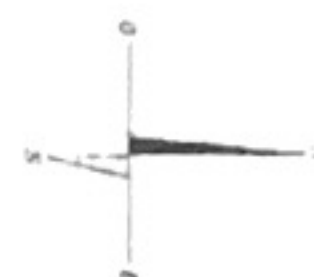
Type : T3 duplex



RDC



R+1



4 A T3	
SURFACES HABITABLES	
SEJOUR	20.30 m ²
CHAMBRE 1	11.60 m ²
CHAMBRE 2	9.50 m ²
ENTREE	4.50 m ²
SDB	4.90 m ²
TOTAL SHAB	50.80 m²
Terrasse non couverte	8.00 m ²
Rangement 1 / bat 3	3.00 m ²
Parking 1 place	4 A